



# The Rapid Pace of Industrial Robotic Integration

Industrial robotic innovations and enable precise movement and handling, allowing increased implementation, ease repetitive labor, in many industries.



**Carlos Gonzalez**  
Research Manager,  
Operational Technology, IDC



**Roderick Gaines**  
Research Director,  
WW Supply Chain Strategies, IDC

# Industrial Robotics Integration by Industry – Worldwide



**As companies look to maximize  
production and increase  
efficiency, the use of robots will  
continue to grow.**

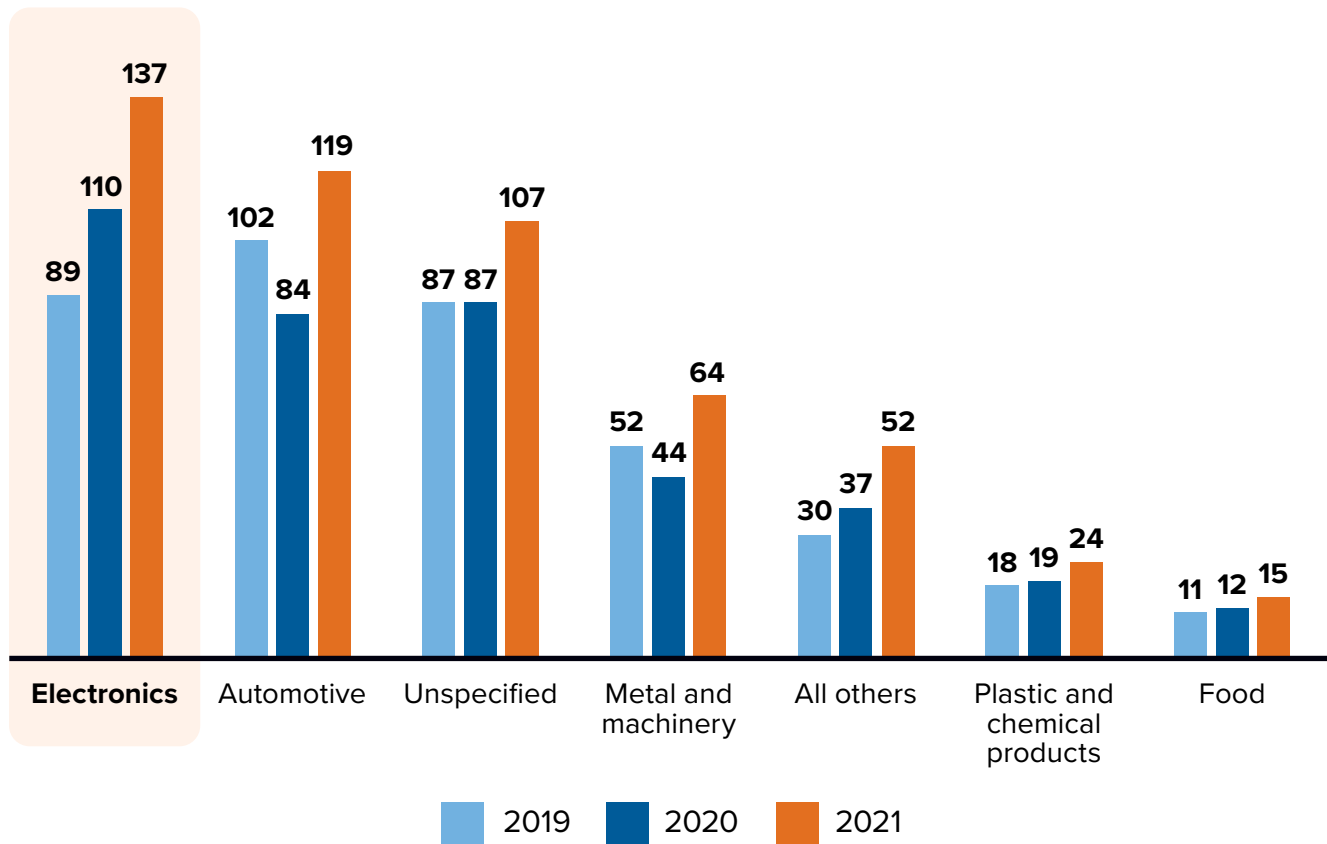
# Industrial Robotics Integration by Industry – Worldwide (continued)



According to the International Federation of Robotics, beginning in 2020 and continuing through 2021, **the electronics industry has led in robotic installations**, surpassing the previously dominant automotive industry.

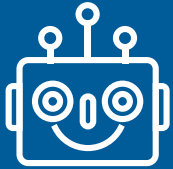
## Annual Installations of Industrial Robots by Industry–World

(Worldwide, 1,000 units)



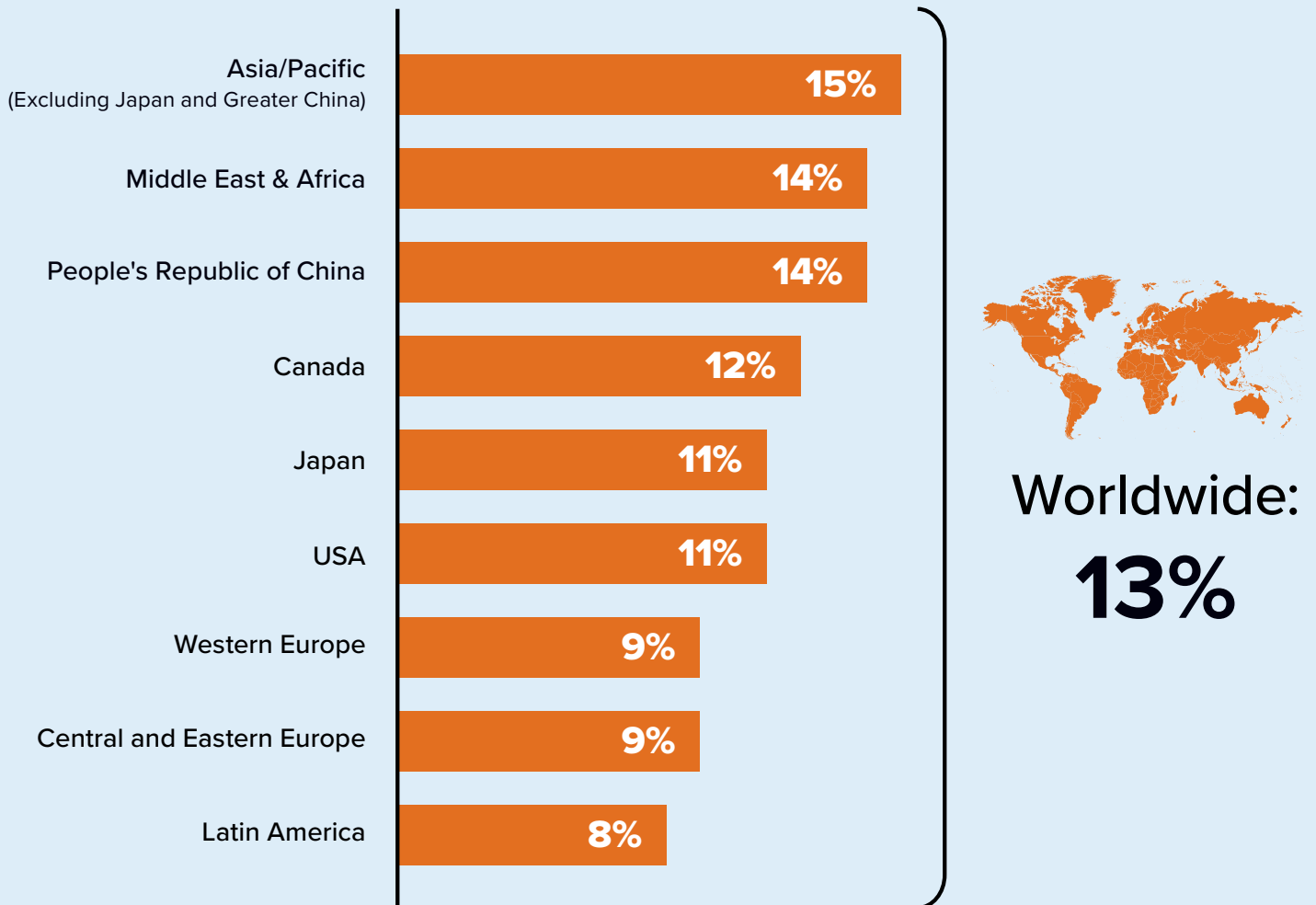
Sources: International Federation of Robotics, *World Robotics Report*, 2022

# 2026–2027 Growth in Industrial Robotic Solution Spending



**Investment in industrial robotic solutions will continue to grow worldwide.** The electric vehicle market will be a main driver as car manufacturers ramp up production. **Articulated robots will continue to dominate the market**, while collaborative robots use cases will expand in environments requiring close human interaction.

## 2026–2027 Growth



# 2026–2027 Growth in Industrial Robotic Solution Spending (continued)

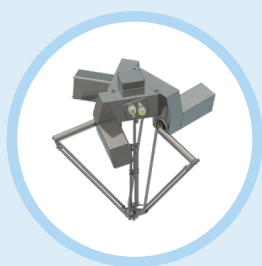
 Robot examples



Collaborative robot



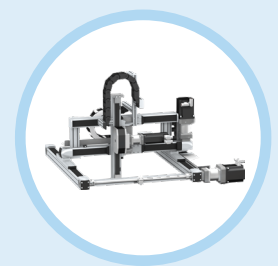
Scara robot



Delta robot



Articulated robot



Cartesian robot

Source: IDC's *Worldwide Robotics and Drones Spending Guide*, 2023 V1.

Robot density is a key metric to indicate which regions lead in automation adoption. According to the IFR, the **Republic Korea is leading the world with:**



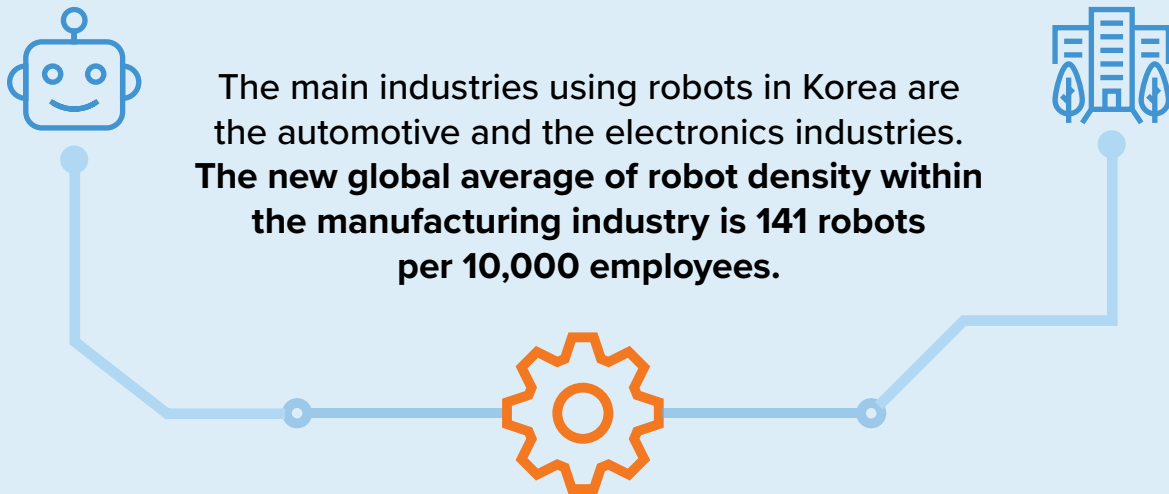
**1,000**  
industrial robots

per



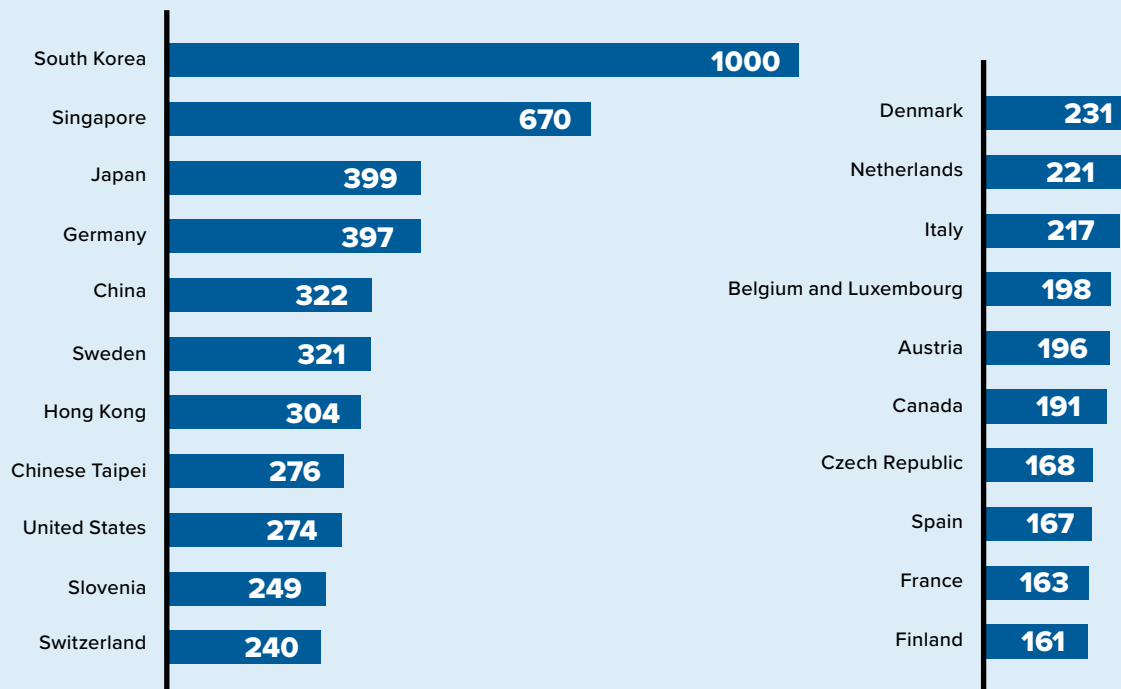
**10,000**  
employees

# 2026–2027 Growth in Industrial Robotic Solution Spending (continued)



## The Countries with the Highest Density of Robot Workers

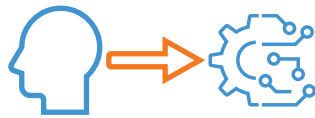
(Robots installed per 10,000 employees)



Source: International Federation of Robotics, World Robotics Report 2022

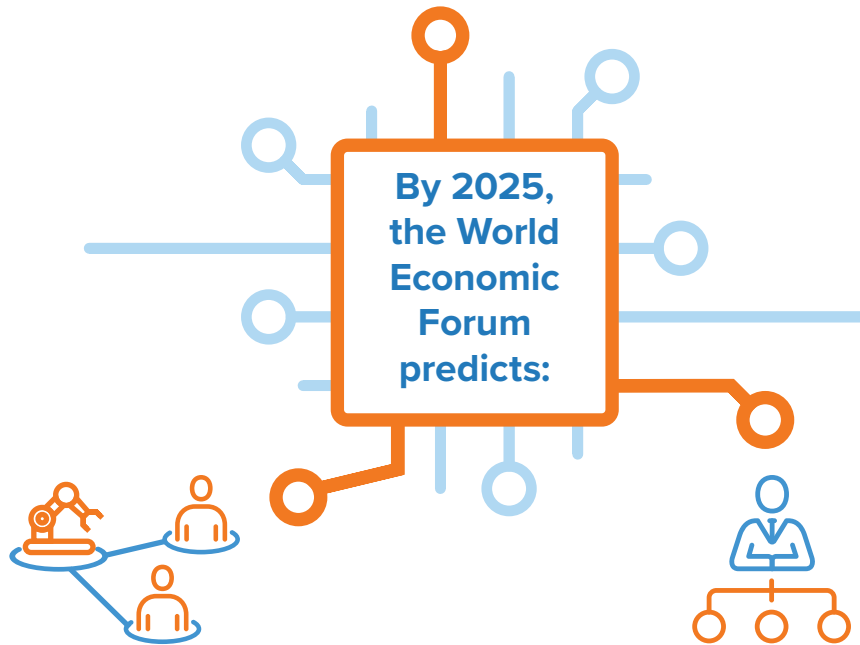
# The Redistribution of Labor Due to Automation

As organizations increase the use of automation and robotics, the workforce will fluctuate as jobs are displaced and new roles are created.



**85 million jobs**

may be displaced by a shift of labor between humans and machines



**97 million new roles**

will emerge to manage automation tools

**34%** of companies plan to **expand their workforce** as a result of deeper technology integration

Source: World Economic Forum, *The Future of Jobs Report*, 2020

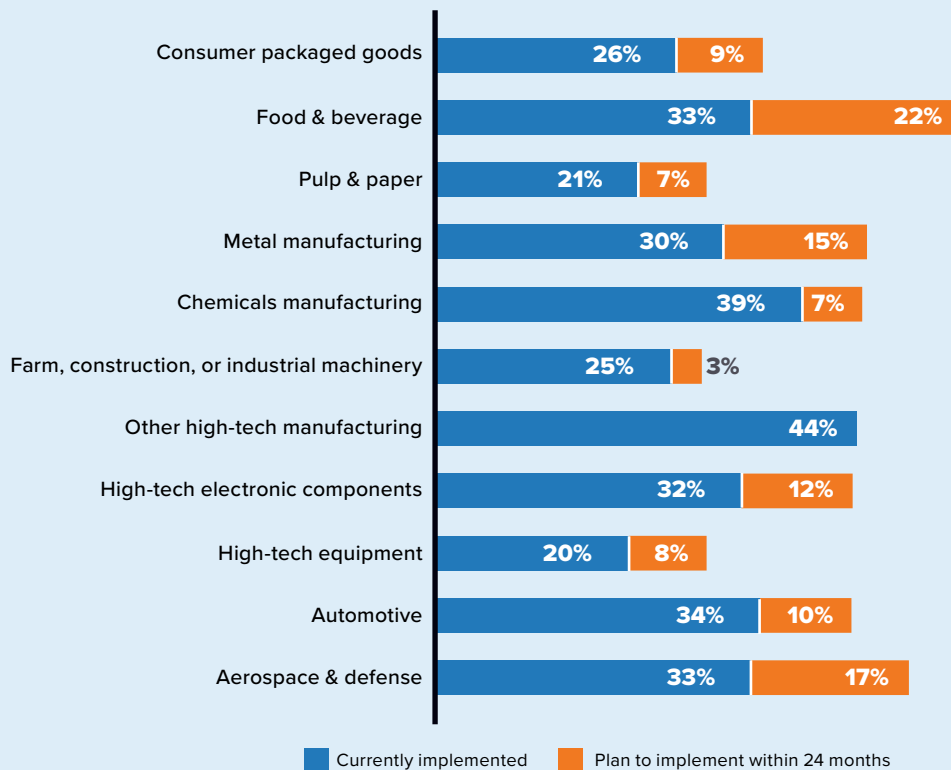
# Exploring Future Investment in Robotics

While several companies acknowledge the importance of robotics for industrial operations, companies can further invest in robots in new areas.



Companies looking for flexible manufacturing and advanced automation should begin to explore the role robots can have within their operations.

## Companies That Currently Have or Plan to Implement Robots In The Near Future



Source: IDC Talent Management Survey, 2022



# Message from the Sponsor

Life Is On



The comprehensive range of Schneider Electric's Lexium multi robots enable high-speed motion as well as precise positioning. The integration and collaborative efforts of robots into the machine control solution is one of the outstanding benefits of EcoStruxure, open, IoT-enabled architecture. It provides endpoint to cloud integration connecting products (including robots, HMI, drives, etc.), controls, software and services. It enables lifecycle solutions from design and build to operate and maintain phases through a digital twin.

[Find out more about Schneider Electric's integrated multi robotics](#)

Produced by:  IDC Custom Solutions

IDC #US50641323

This publication was produced by IDC Custom Solutions. The opinion, analysis, and research results presented herein are drawn from more detailed research and analysis independently conducted and published by IDC, unless specific vendor sponsorship is noted. IDC Custom Solutions makes IDC content available in a wide range of formats for distribution by various companies. This IDC material is licensed for external use and in no way does the use or publication of IDC research indicate IDC's endorsement of the sponsor's or licensee's products or strategies.



 @idc

 @idc

[idc.com](http://idc.com)